

Rivolti degli accordi di tre suoni

The image displays six systems of musical notation, each consisting of a treble and a bass staff. The bass staff contains notes and figured bass notation, while the treble staff is empty. The figures represent the inversions of triads.

System 1: Bass staff notes are G2, B1, D2. Figures below are 3, 6, 6, $\frac{6}{4}$, 3.

System 2: Bass staff notes are G2, B1, D2, G2, B1, D2, G2, B1, D2. Figures below are 3, 6, $\frac{6}{4}$, 5, 6, $\frac{6}{4}$, 5, 6, $\frac{6}{4}$.

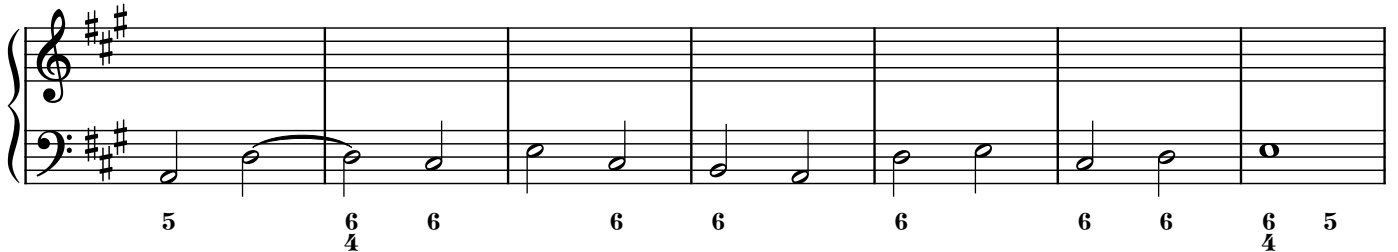
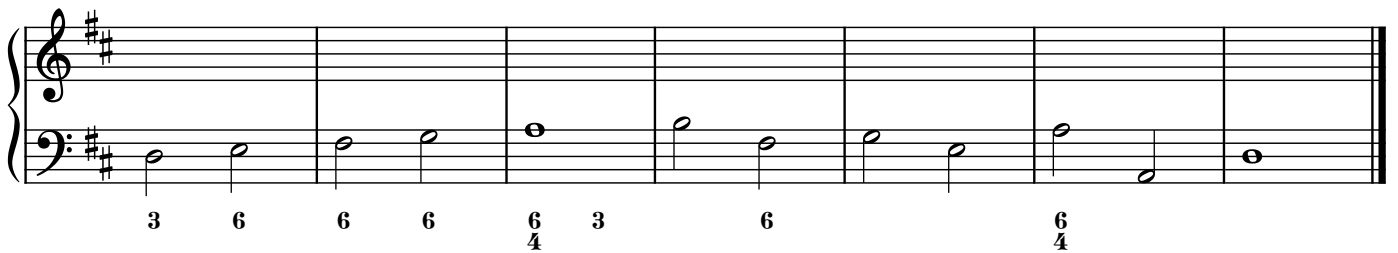
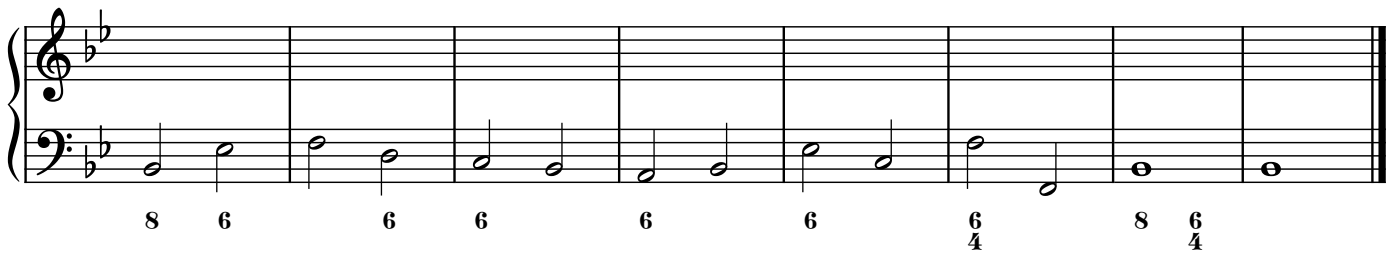
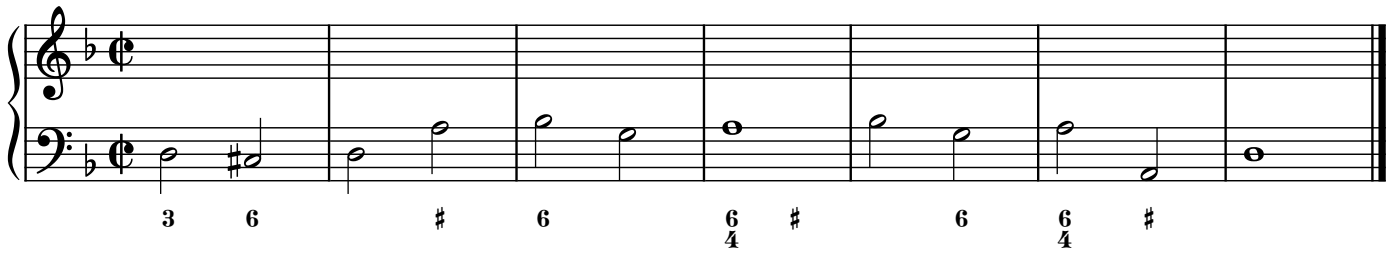
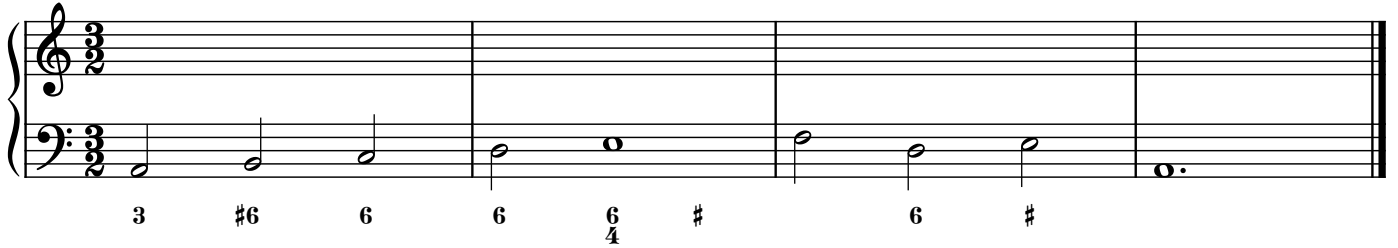
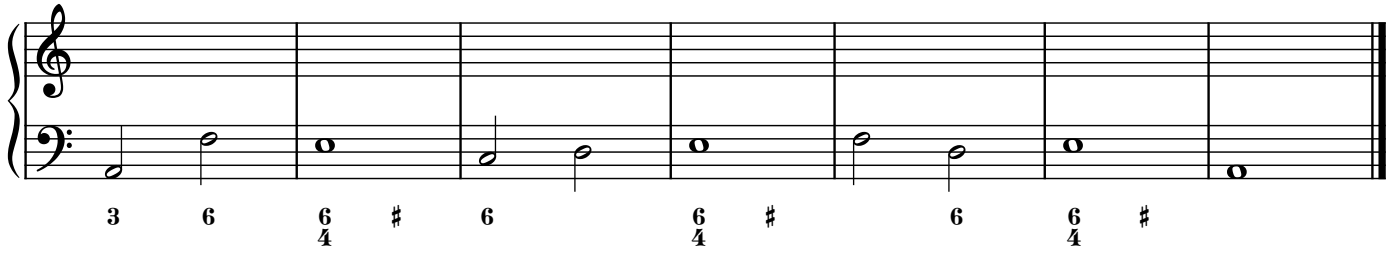
System 3: Bass staff notes are G2, B1, D2, G2, B1, D2, G2, B1, D2, G2, B1, D2. Figures below are 3, $\frac{6}{4}$, 5, 6, 6, $\frac{6}{4}$, 8, $\frac{6}{4}$.

System 4: Bass staff notes are G2, B1, D2, G2, B1, D2, G2, B1, D2, G2, B1, D2. Figures below are 3, 6, $\frac{6}{4}$, 6, 6, 6, 6, 6, $\frac{6}{4}$.

System 5: Bass staff notes are G2, B1, D2, G2, B1, D2, G2, B1, D2. Figures below are 3, 6, 6, 6, 6, $\frac{6}{4}$, $\frac{6}{4}$.

System 6: Bass staff notes are G2, B1, D2, G2, B1, D2, G2, B1, D2. Figures below are 3, #, 6, #, $\frac{6}{4}$, #.

2



3 6 6/4 6 6/4 # 6 #

3 6/4 5 6 6/4 5 6 6 6 5

6 6/4 3 6 6 6/4 8 6/4

8 6 6/4 3 8

6 6 6/4 3

8 6 # 6 #6/4 6 # # 6 #

5 6 6 # 6 6 6 6/4 #

4

6 # 6 #6/4 6 6/4 #

8 6 6 6 6 6 6/4 5 6

6/4 6 6/4 6

8 # 6 # #

(Sol magg.....)
6 6 6 6/4

5 6 6 6 6/4 5

6 6/4 6 6 6 6/4 5

3 6 6/4 6 3 6 6

3 6 6 6/4 6 6 6/4

8 6 6 6 6 6 6/4 6 6

3 6 6 6/4 5 6

3 #6 6 # 6 # 6/4 #

3 6 6/4 6 6/4 # 8 6/4